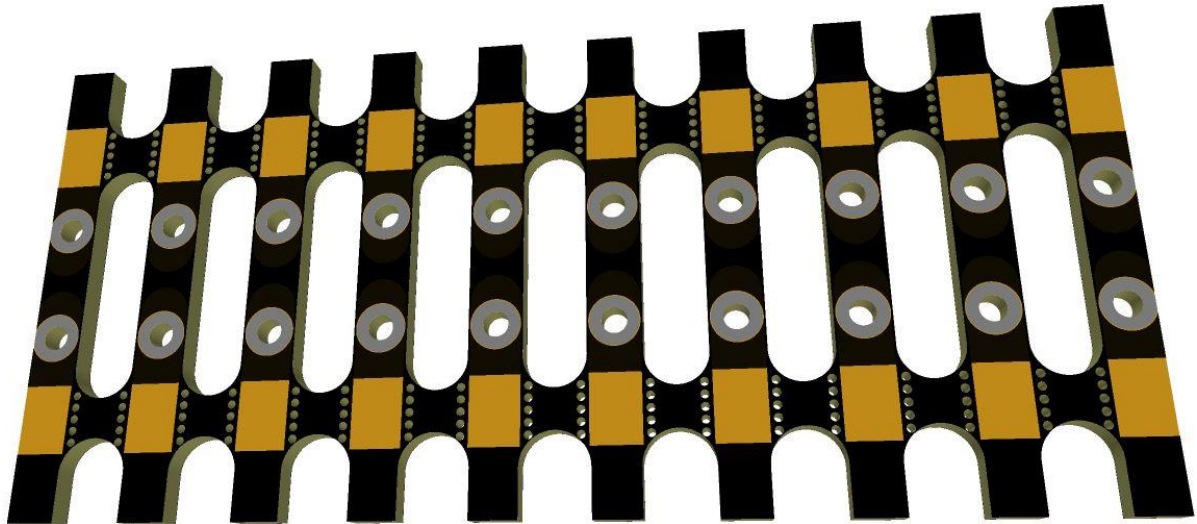


# JTElectronics

## Track Tie / Power Feeder HO Scale

### Model: JTETT1-HO



The JTETT1-HO track tie / power feeders can be used to simply and reliably connect power feeder wires to HO scale track. Since the JTETT1-HO is soldered to the track rails, it will also keep the track rails at the correct spacing. You can also snap off two adjacent track tie boards to join the ends of two blocks of track and provide power connections to both track blocks.

#### FEATURES:

- Comes in a strip of 10 track ties
- Individual track ties can be “snapped” off and sanded/filed
- They are black so look very similar to plastic track ties
- Can be used to feed power to DC or DCC track systems
- Perforated holes so you can easily “snap” off individual track tie boards

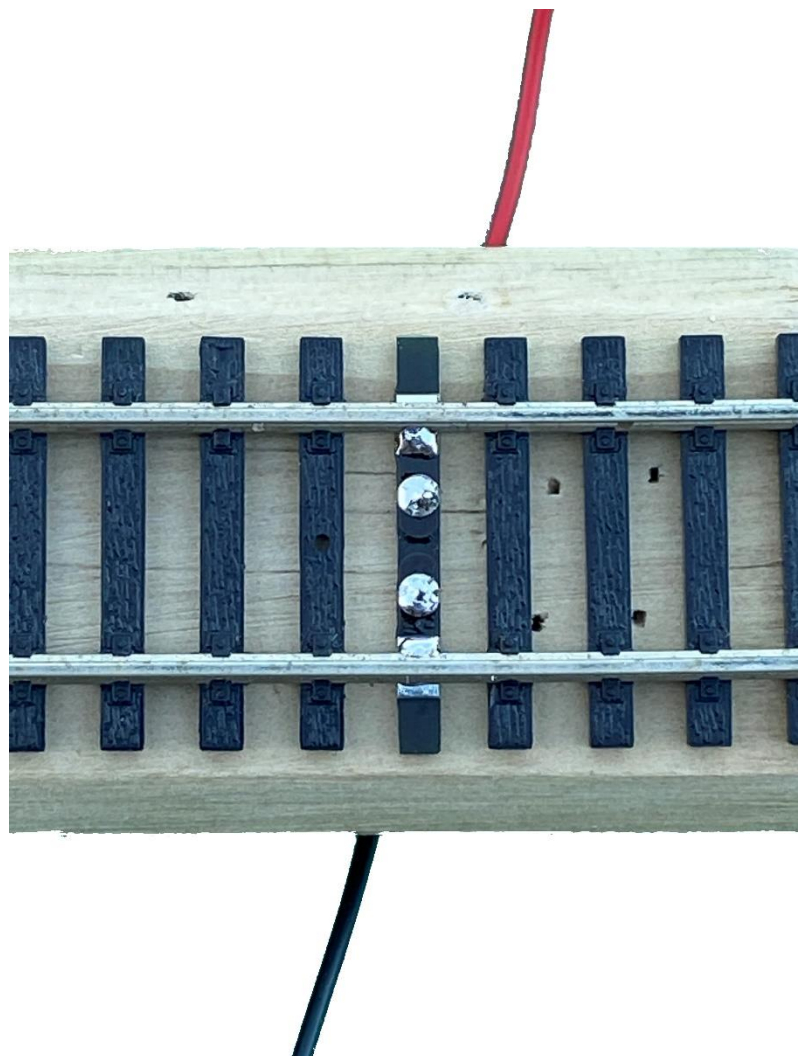
## **FEEDER WIRES SOLDERED TO JTETT1-HO BOARD**

This photo shows track power feeder wires soldered to an individual JTETT1-HO track tie board, just prior to installing it under the track rails.



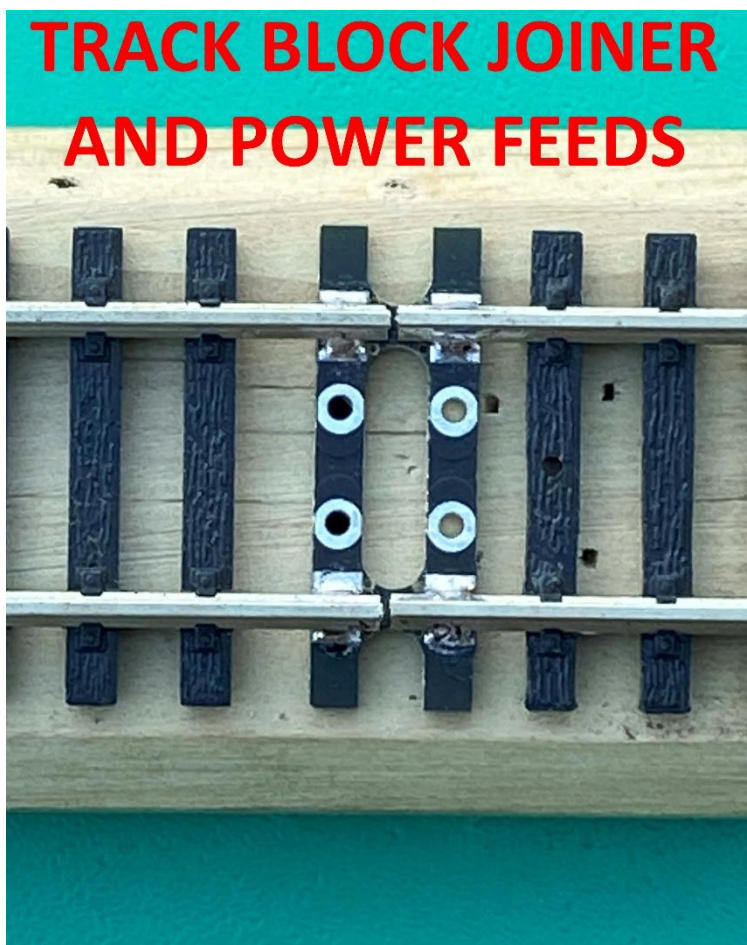
## **TRACK POWER WIRES SOLDERED TO JTETT1-HO BOARD**

This is a photo of an individual JTETT1-HO track tie board soldered to the track rails with power feeder wires running down through the roadbed.



## **TRACK POWER WIRES SOLDERED TO JTETT1-HO BOARD**

This is a photo of two adjacent JTETT1-HO track ties snapped off together and used to join two track blocks, also providing individual track power connections for each block for you to connect your track power feeder wires as required.



## **JTETT1-HO TRACK JOINER SPECIFICATIONS:**

Board Dimensions

Approx. 30mm length x 3mm length x 1.6mm thick

Track Scale

HO

**The JTETT1-HO is sold in a strip of 10 boards**

